

# Agitators & Mixers



[www.ceeconsprocess.com](http://www.ceeconsprocess.com)



**Ceecons Process Technologies**

# CPT-PravaH

The company with an unique capability to solve complex tasks in the Fluid Mixing leveraging technology and its immense exposure in the Chemical Process Industries, since 1990.

With an array of our wide line up Mixer Models & Services, we offer the most reliable Fluid Mixing Systems for Sewage treatment plants to Gold Mines.

CPT-PravaH range of Mixers provide the most Economical and Enduring remedies for challenging Mixing Tasks in **FLUE GAS DESULPHURISATION, PHOSPHORIC ACID, NANO-FERTILISERS, WNA/CNA/AMMONIUM NITRATE, BIO-GAS, PAPER & PULP, STARCH & DERIVATES, OIL & GAS** plants.



## Product Portfolio

EQUIPMENT	MODEL
Top Entry Agitators	Stallion, Tusker, Magna, Jumbo
Side Entry Agitators	Electron
Bottom Entry Agitators	Erth
Adjustable Agitators	Chemeleon
Flocculators	Lens
Static Mixers	Sthir

## AREA OF EXPERTISE

- ▶ Chemical & Petro-chemical
- ▶ Oil & Gas
- ▶ Starch & Derivatives
- ▶ Cement & Construction Chemicals
- ▶ Heavy Chemicals & Fine Chemicals
- ▶ Pharmaceuticals & Nutraceuticals
- ▶ Minerals & Metals
- ▶ Thermal Power & Alternate Fuel
- ▶ Polymer & Plastics
- ▶ Fertiliser & Farm Inputs
- ▶ Space Science & Life Science
- ▶ Bio-gas & Hydrogen
- ▶ Grease & Lubricants
- ▶ Health Care & Beauty Care

## INDUSTRIES SERVED

- ▶ Agro Chemicals
- ▶ Alternate Fuels
- ▶ Aroma Chemicals
- ▶ Bio-Fuels
- ▶ Brewery
- ▶ Cement-AAC
- ▶ Chlor-Alkali
- ▶ Dairy
- ▶ Fertilizer
- ▶ Fine Chemicals
- ▶ Food & Beverage
- ▶ Hospitals / Health Care
- ▶ Home & Personal Care
- ▶ Industrial Explosives
- ▶ Iron & Steel
- ▶ Mineral Ore
- ▶ Printing Inks
- ▶ Municipal Waste Treatment
- ▶ Sewage Treatment
- ▶ Iron & Steel
- ▶ Space Science
- ▶ Bio-Fuels
- ▶ Phyto-Chemicals
- ▶ Fine Chemicals
- ▶ Hospitals / Health Care
- ▶ Bio-Mass
- ▶ Distillery
- ▶ Ethanol
- ▶ Flavors & Fragrances
- ▶ Oil Lubricants & Greases
- ▶ Paper & Pulp
- ▶ Phosphoric Acid Plants
- ▶ Polymerization
- ▶ Specialty Chemicals
- ▶ Starch & Derivatives
- ▶ Sulphuric Acid Plants / DAP
- ▶ Winery Plant



## GPT-PravaH Design Capability

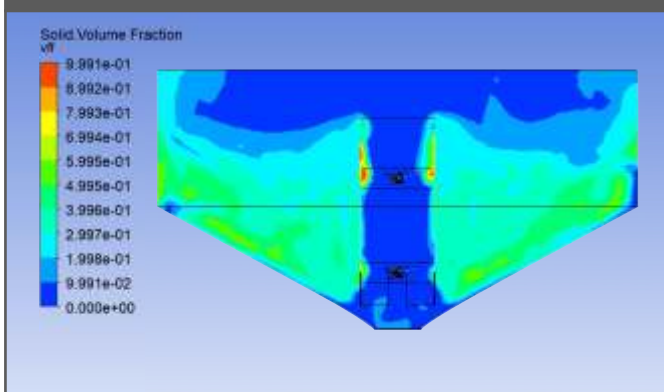
Our Equipment Design & Construction are time tested and born out of meticulous detailing to qualify for services in the rugged process environments including highly corrosive, erosive and abrasive process duties where the combination of optimized power input and efficient mixing are our routine.

Every mixer is designed based on the process task it has to accomplish and power is optimized based on flow and shear.

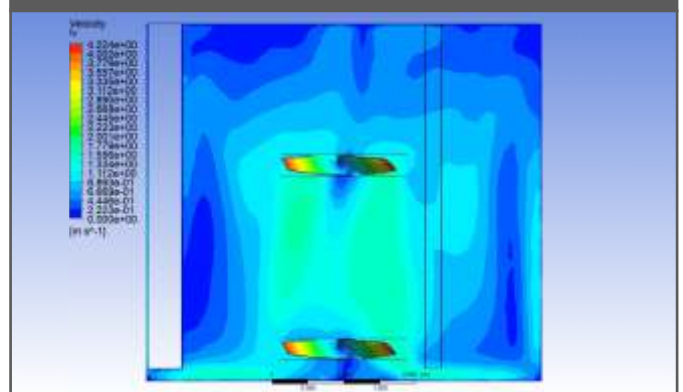
Synergy of 34+ years of field experience and CFD technique enhances every critical mixer design and construction.

Our pre and post supply field survey ensures flawless process and mechanical Design and construction of the Agitators.

### CFD-MULTI PHASE - SULPHUR MELTER AGITATOR



### CFD-SINGLE PHASE - NANO UREA APPLICATION



## GPT-PravaH Quality Commitment

- ▶ Every product Design and construction are to be viewed from End user point of view for optimized energy, robust constructions and least maintenance.
- ▶ To Maintain the record of ZERO-DEFECT years in product quality,
- ▶ Sourcing, Processing, Manufacture, Assembly, Testing, Painting, Packing and Loading- In every step, meticulous screening of quality adapted for utmost customer satisfaction



IMPELLERS



HYDROFOIL



ANCHOR WITH WALL SCRAPPER



PITCHED BLADE TURBINE (PBT)



HIGH SHEAR SAW CUTTER



HELIX



STATOR ROTOR



RUSHTON TURBINE



HFLS

MODELS



STALLION+  
TOP ENTRY - LIGHT DUTY



TUSKER  
TOP ENTRY



MAGNA  
TOP ENTRY



CHEMELEON  
CHANGE - CAN MODEL



STHIR  
STATIC MIXER



ELECTRON  
SIDE ENTRY



ERTH  
BOTTOM ENTRY



JUMBO  
TOP ENTRY - HEAVY DUTY



### FLUE GAS DESULPHURISATION UNITS IN THERMAL POWER PLANT

Duty is Critical, Rugged, Erosive, Abrasive and Corrosive. High Concentration Gypsum and Limestone Slurry Mixing. Solid suspension and Absorbing are the major task. We offer MAGNA for Top Entry and ELECTRON for Absorber Side Entry Agitator duties.

Preferred by NTPC, BHEL, TATA Power, TANGEDCO, NTPL, TSGENCO and MAHAGENCO



### PHOSPHORIC ACID PLANTS/SULPHURIC ACID PLANTS/DAP/ZINC SULPHATE MONOHYDRATE

In Major Fertilizer plants, by capitalising our innovative techniques, immense Experience in Design and Construction of Mixing Equipment, We have drastically reduced the frequent break-down problems in the Agitators supplied by our MNC competitors. This in particular to WET PHOSPHORIC ACID REACTORS and PA DAY TANK AGITATORS, STRONG AND WEAK ACID STORAGE TANK AGITATORS, PUMP TANK AGITATORS, SC TANK AGITATORS, PRE-NEUTRALISERS in PAP and SAP Agitators like MELTING PIT, DIRTY PIT AND PRE-COAT PITS.

IFFCO, GNFC, ADVENTZ, COROMANDAL INTERNATIONAL AND INDO RAMA are some of the beneficiaries of using CEECONS PROCESS. Model - Jumbo, Tusker



### STARCH & DERIVATIVE PLANTS

CEECONS PROCESS is the synonym to AGITATORS in major Starch Plants in India & Bangladesh.

Several Starch & Derivative plants reap the benefit of our optimized and maintenance free Agitator Design for their STARCH SLURRY, FIBRE SLURRY, GERM WASH, HYDROCYCLONE, CENTRIFUGE FEED, HEAVY GLUTEN, LIGHT GLUTEN, INTERMEDIATE, PIN-MILL, REFINED STARCH, SACCHARIFICATION, CORN STEEP LIQUOR, REACTION TANK, PH ADJUSTMENT TANK AGITATORS in STARCH, LIQUID GLUCOSE, MALTO DEXTRINE, DEXTRINE, DMH, DH & SORBITOL Plants.

ROQUETTE, AMBUJA & HL AGRO are prestigious customers in Starch industry. Model - Tusker & Electron



### AMMONIUM NITRATE/WEAK NITRIC ACID/CONCENTRATED NITRIC ACID PLANTS/NANO-UREA-NANO DAP

Agitator models 'MAGNA', 'ELECTRON' and 'TUSKER' widely used in these industries.

IFFCO/GNFC are our end customers in this line.



### MINERAL ORE SLURRY & CHEMICAL BENEFICIATION

Ore Slurry & Chemical Beneficiation - CPT-Pravah Agitators efficiently perform the task of Mixing Ore slurry in Minerals & Metals and in chemical beneficiation plants with low capital and operating cost. Our agitator models Magna is most suitable for this application which is capable of handling high inertial load as well shock load together in slurry preparation and transportation areas.

JINDAL STAINLESS STEEL, JSW SAW, SARADA METALS, ARCELOR MITTAL NIPPON STEEL patronize our Magana Model Agitators.



**POLYMERISATION**

With our scientific approach in Design and Construction, we have achieved very high success rate in the performance of our POLY REACTORS AND BLOW DOWN Tank Agitators in PVC and other Polymerisation Industries. Viscosity – upto 100,000cp

TCI SANMAR CHEMICALS SAE, EGYPT, CHEMPLAST SANMAR are our customers who add glory to our clientele.



**BIO-MASS**

'ELECTRON' our side Entry Agitator model is the bye-word for Digester Agitators in BIO-MASS Plants, 'ELECTRON' delivers high flow with low power input, Modular in construction, least maintenance requirement

'TUSKER' our top entry Agitator model is goes handy to storage tanks for mixing the bio-mass.

Numerous Bio-mass plants in INDIA and NEPAL give us the pride, by using CEECONS PROCESS.



**SPECIALITY CHEMICALS**

'MAGNA' is the top entry model which employs HELIX & HSD combination for most complex high viscous mixing in H2 and speciality chemicals manufacturing plants.

'MAGNA' is born tough and seasoned to most rugged working environment with high temperature, high pressure and high viscous material handling. Viscosity – Upto 350,000cp



**FLAVORS & FRAGRANCES**

As the name suggests, Our easy to install and operate 'CHEMELEON' model Mixer adapts to vessels of various capacities from 5L to 3000L in flavors and Fragrance industry.

'CHEMELEON' feature with motorized lifting and lowering mechanism, Variable speed Drive, multiple shaft impeller assembly to match any tank dimension range for which is designed.

IFF, SYMRISE, CARGILL, STONEFIELD are some of our clients.



**ANTI- OXIDANTS AND FUNCTIONAL ADDITIVES (GREASE & LUBRICANTS)**

Lubrication is an essential aspect in any rotating machinery and in automobiles. CPT-PravaH plays a most essential role in providing energy efficient and maintenance friendly Mixers for the Lubricant industries.

MAGNA, TUSKER, ELECTRON and STALLION+ are the range of Mixers chosen to service this industry

INDIAN OIL, BPCL, GULF OIL, TIDE WATER- VEEDOL, KOTHARI PETRO TRINITY LUBES ARE SOME OF THE USERS OF CPT-PRAVAH AGITATORS

# RESPONSIBLE MIXING - SINCE 1990



## GPT-PravaH Suraksha

With tremendous Confidence in our Customers and in our Design & Construction CEECONS PROCESS offers UNCONDITIONAL 3 year Guarantee for Process and Mechanical performance of all our products.



## GPT-PravaH Advantage

No worries from where your mixer is sourced. If you have any process or mechanical issue in your present Mixer, Call CEECONS PROCESS for survey and remedy.



## GPT-PravaH Dream

'MIXER FAILURE SHOULD NEVER BE A CAUSE OF PROCESS BREAK-DOWN OR A PLANT SHUT-DOWN IN ANY PROCESS INDUSTRY'



## GPT-PravaH After Sales

Our standard 3 year unconditional warranty for process and mechanical performance is the assurance for the quality standards adapted in Design and Construction of process equipment.

Irrespective of the age of our mixer, we at CEECONS PROCESS assure you the following services also after the warranty period:

Free site survey and assessment

Supply of genuine and compatible spare parts

Spares with latest Technology and compatible to OE

Extended warranty for spares

Easy reachability





## CPT-PravaH Philosophy

- We approach every mixer design from the end user view point.
- Your Mixer/Clarifier should accomplish the task you intend it to do.
- It should be simple to operate and maintain.
- It should serve you over prolonged period.
- It should be aesthetically good, economical and efficient.
- It should be built by company that will support the mixer and customer friendly.



### **AMBATTUR FACILITY:**

CEECONS PROCESS TECHNOLOGIES (CPT PRAVAH-FACTORY),  
SP-66 & 69, 3rd Main Road, 4th street, Sector 3,  
Ambattur Industrial Estate, Ambattur,  
Chennai - 600 058. TAMILNADU. INDIA

Phone : +91 44-2624 2436 / 35

Mobile: +91 98410 38563, +91 98416 60436, +91 98416 62166

Email : [nagaraj@ceeconsprocess.com](mailto:nagaraj@ceeconsprocess.com)

[aarathi@ceeconsprocess.com](mailto:aarathi@ceeconsprocess.com)

[ramesh@ceeconsprocess.com](mailto:ramesh@ceeconsprocess.com)

[anand@ceeconsprocess.com](mailto:anand@ceeconsprocess.com)

Web : [www.ceeconsprocess.com](http://www.ceeconsprocess.com)



**CPT-PravaH**  
ENGINEERING BY PASSION

